

# Setting Up Myriad Payout & OCP To Provide 'Now Playing' Information For The Broadcast Player

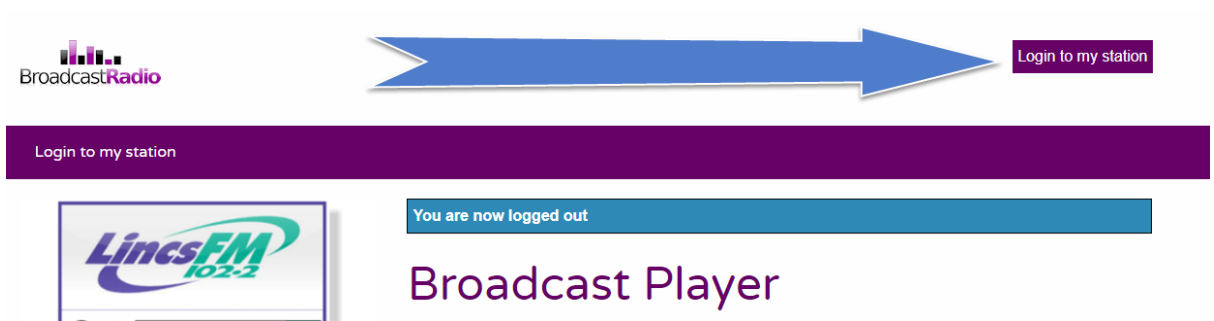
## Things You Will Need

- Myriad 4 Payout Studio License (or higher)
- Myriad OCP 4 Standard (or higher)
- Your Broadcast Player API Key
- Admin Access To Myriad & Windows

Please note that 'Now Playing' information in Myriad is derived from what is playing in the Dashboard / Log so will only work when you are running in Live / Auto / AutoFade modes from the Log. If you usually drag Carts into Cart Players then 'Now Playing' information will be available to your Broadcast Player and should be disabled in the Player Portal.

## Step 1 – Get You API Key

1. Go to the Player Portal – <http://player.broadcastradio.com>
2. Use the **Login To My Station** button located in the top right hand of the window to login to your Player Portal.



3. Use your **Username & Password** to login to the Player Portal. These will be provided by Broadcast Radio when we enable your service. If in doubt, contact [hello@broadcastradio.com](mailto:hello@broadcastradio.com).

# Login

Please enter your username and password to login.

Username

Hot FM

Password

.....

Login

4. Click on the **Edit** button.


## Station Information


Welcome back

Customise your Broadcast Player by clicking the Edit button.

### Hot FM

Hot FM- Music 24/7. Listen for the best in music, entertainment and local news

Edit Op 

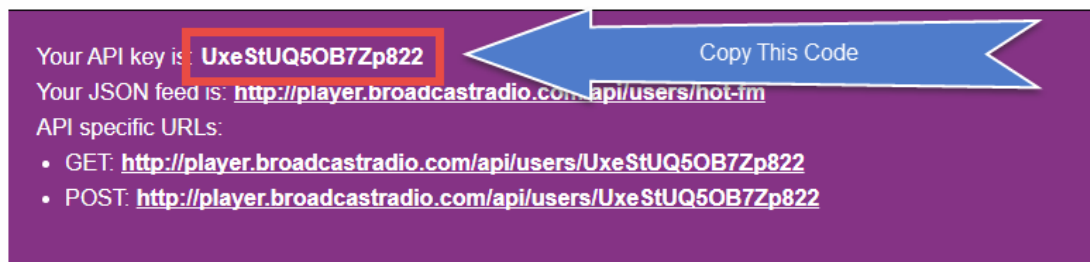


5. Click on the **API Key** tab and make a note (best to copy) the **API Key**.



## Manage your API key

### Re-generate API key



Your API key is: **UxeStUQ5OB7Zp822**

Your JSON feed is: <http://player.broadcastradio.com/api/users/hot-fm>

API specific URLs:

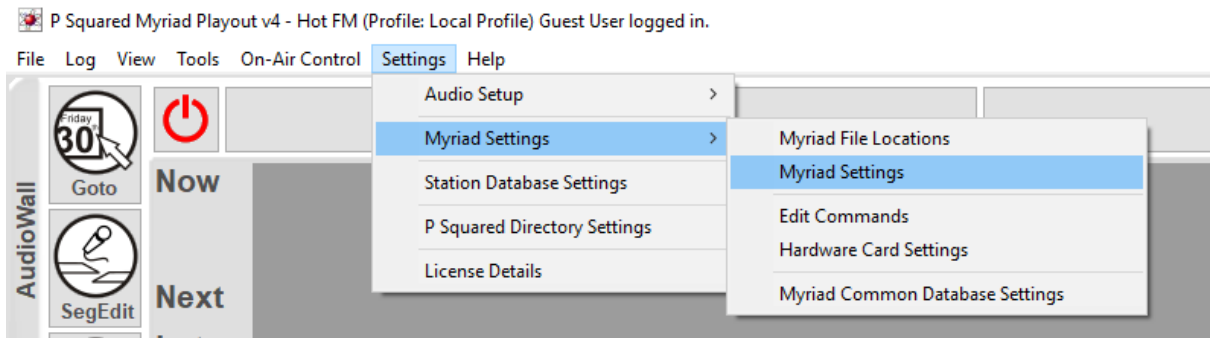
- GET: <http://player.broadcastradio.com/api/users/UxeStUQ5OB7Zp822>
- POST: <http://player.broadcastradio.com/api/users/UxeStUQ5OB7Zp822>

6. Make sure your API Key is written down exactly as it appears. The best way to be sure is to copy it and paste it into a text document (or word document) for later.

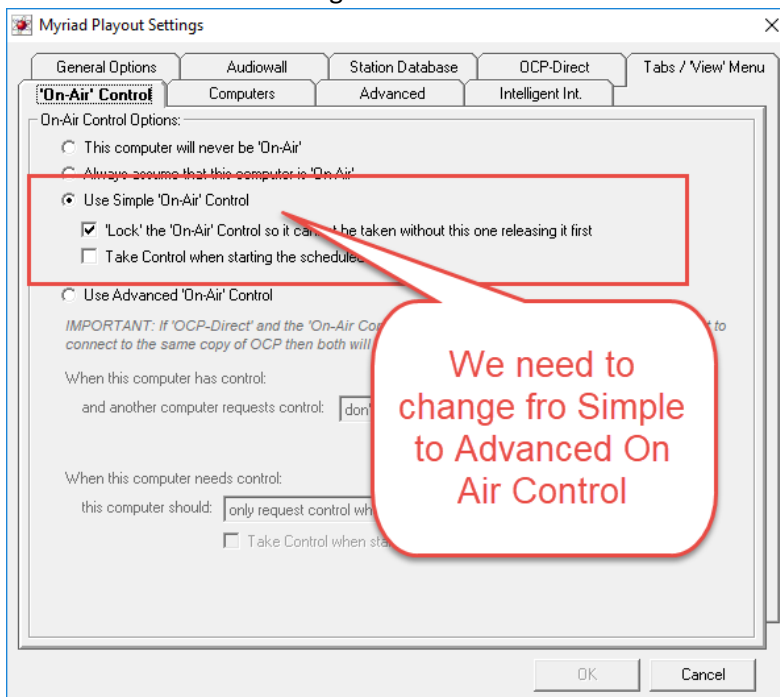
## Step 2 – Setting Myriad Up To Use Advanced On Air Control

Please note that if you are already using OCP for other things then this step will already be done so you can jump straight ahead to Step 4.

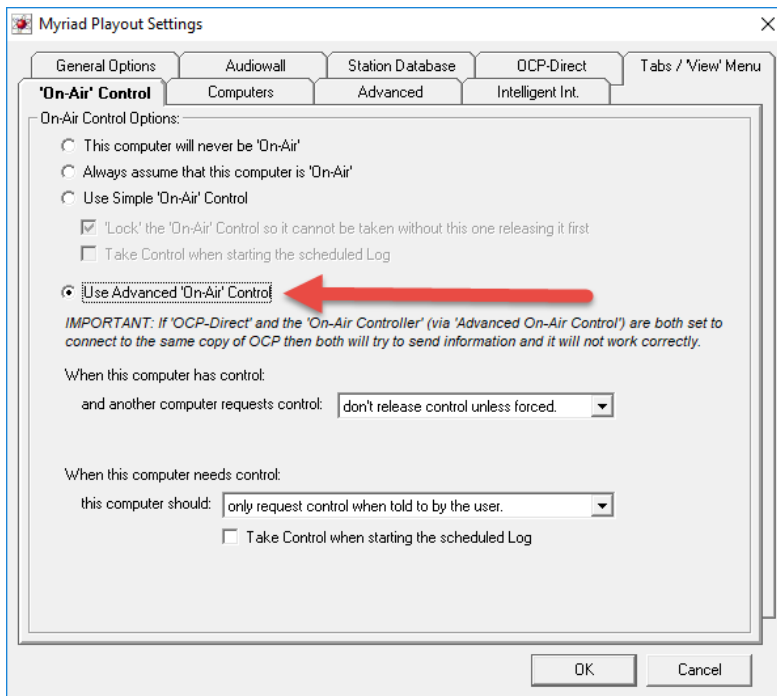
1. Run **Myriad Playback** with sufficient user access to edit the Settings.
2. Access the **Myriad Settings** by **Settings Menu > Myriad Settings > Myriad Settings** option.



3. Click on the **On Air Control** tab.
4. By default, Myriad Playback uses Simple On Air Control which allows you to switch 'On Air' between Myriad workstations but it does not interact with external services (such as OCP). If your settings look like the screen shot below then you currently using Simple On Air Control which we will need to change to **Advanced On Air Control**.



5. Make sure you are using **Advanced On Air Control** as shown below.



The other settings in the Advanced On Air Control allow you to set what this Myriad system will do when another requests control or what it should do when it does not have control. These settings are covered in the main documentation. In most cases the default settings will be correct.

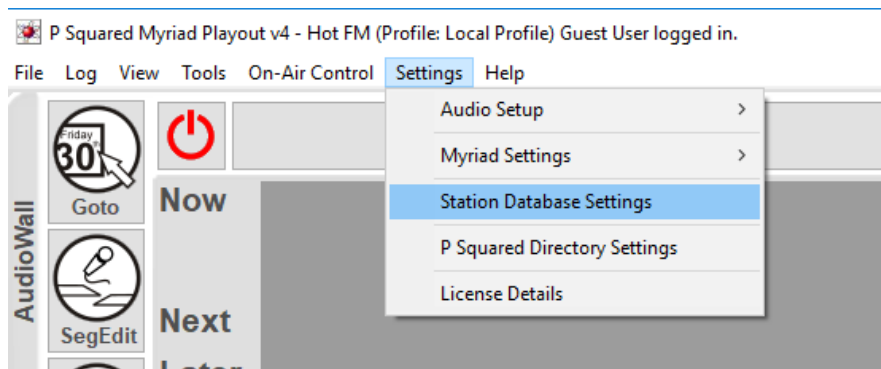
6. Click the **OK** button to save the settings.

### Step 3 – Telling Myriad About OCP

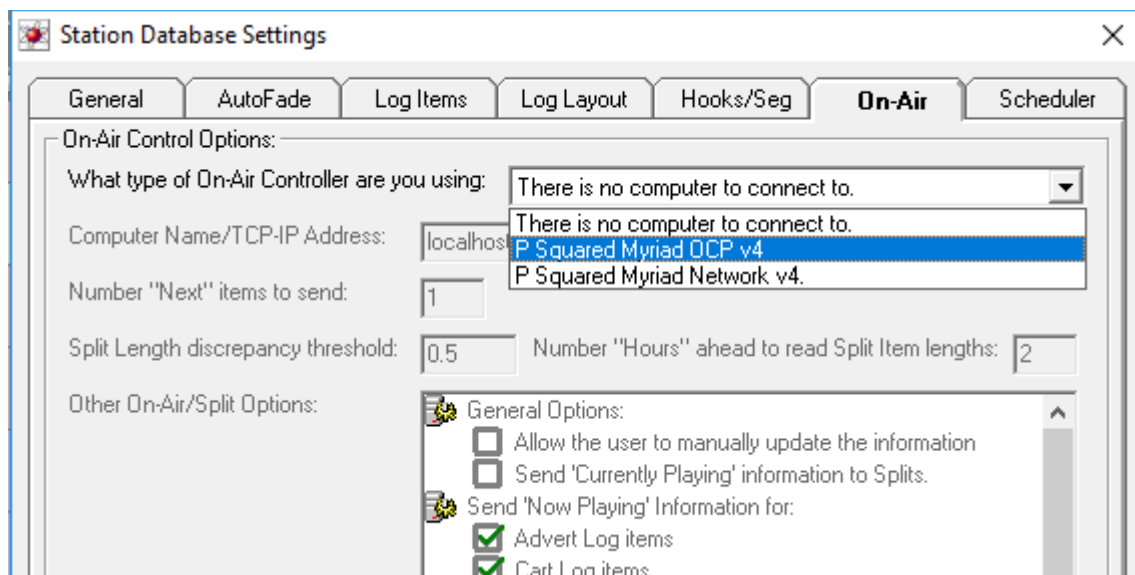
Please note that if you are already using OCP for other things then this step will already be done so you can jump straight ahead to Step 4.

Now that Myriad Payout is setup to use Advanced On Air Control, we need to tell is about OCP and what information to send.

1. Open the **Station Database Settings** by accessing **Settings Menu > Station Database Settings**.

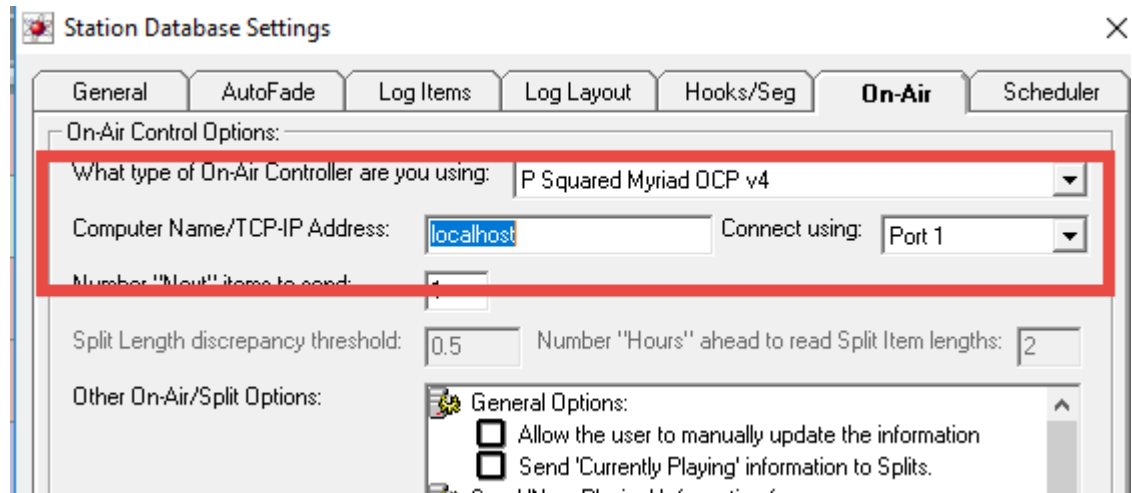


2. Click on the **On Air** tab.
3. The top option allows you to select the **Type Of On Air Controller You Are Using**. Use the drop down list to select OCP.



4. Next you need to tell Myriad the name or IP address of the computer that is running OCP. In this example, OCP is running on the same computer as Myriad so we can set the **Computer Name / TCP-IP Address** to **localhost**. If OCP is running on a different computer then you

should type in the IP address for the computer it is on (IP address is better than computer name).

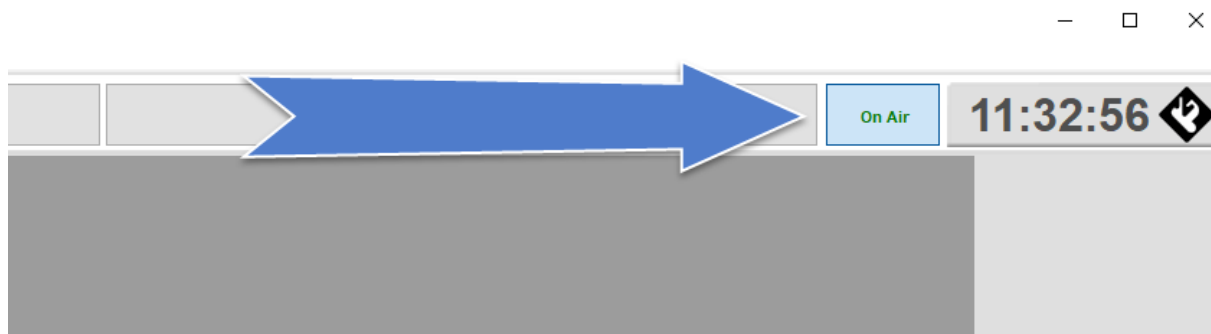


The **Connect Using** field can be left as **Port 1** unless you are running multiple OCP's or OCP Pro's.

5. All of the rest of the settings on this screen determine what information Myriad sends to OCP. Leave everything as **Default** for now and consult the main Myriad documentation for more detail about what the settings do.
6. Click on **OK** to save the settings.

You should now be able to click on the Off Air / On Air button on the top right of the Log screen to take 'On Air' control.

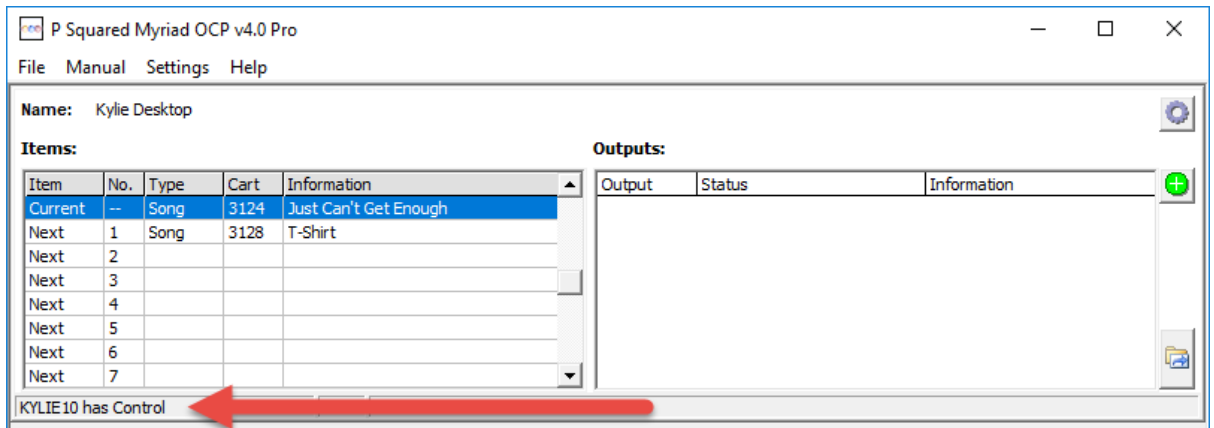
If Myriad connects to OCP and takes control, it will look like the image below.



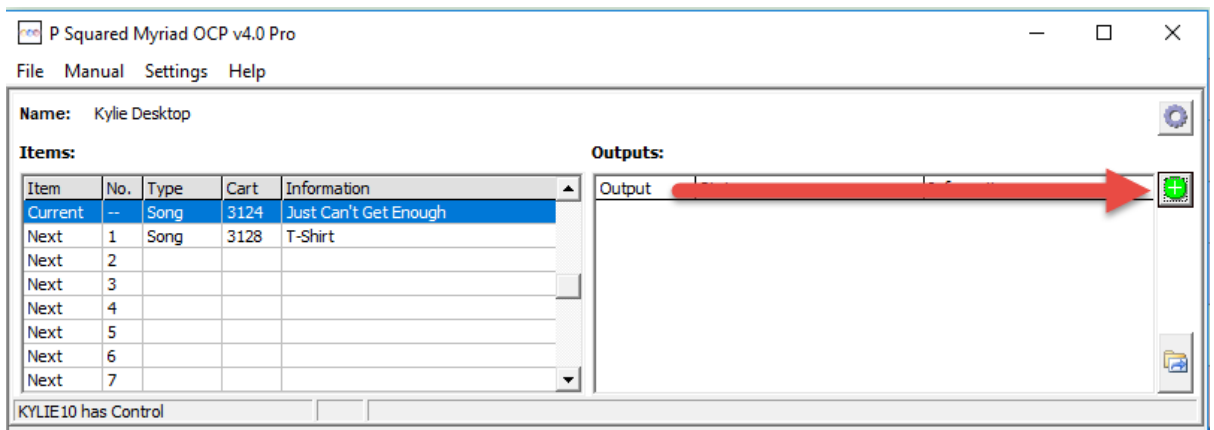
## Step 4 – Setting UP OCP To Connect To Your Broadcast Player

Now that Myriad is setup to use OCP, all we need to do is setup OCP to connect to the Broadcast Player.

1. Run **OCP**.
2. Before we go any further, check that OCP is being controlled by the Myriad system you expect. On OCP, the name of the controlling computer is displayed in the bottom left hand corner.

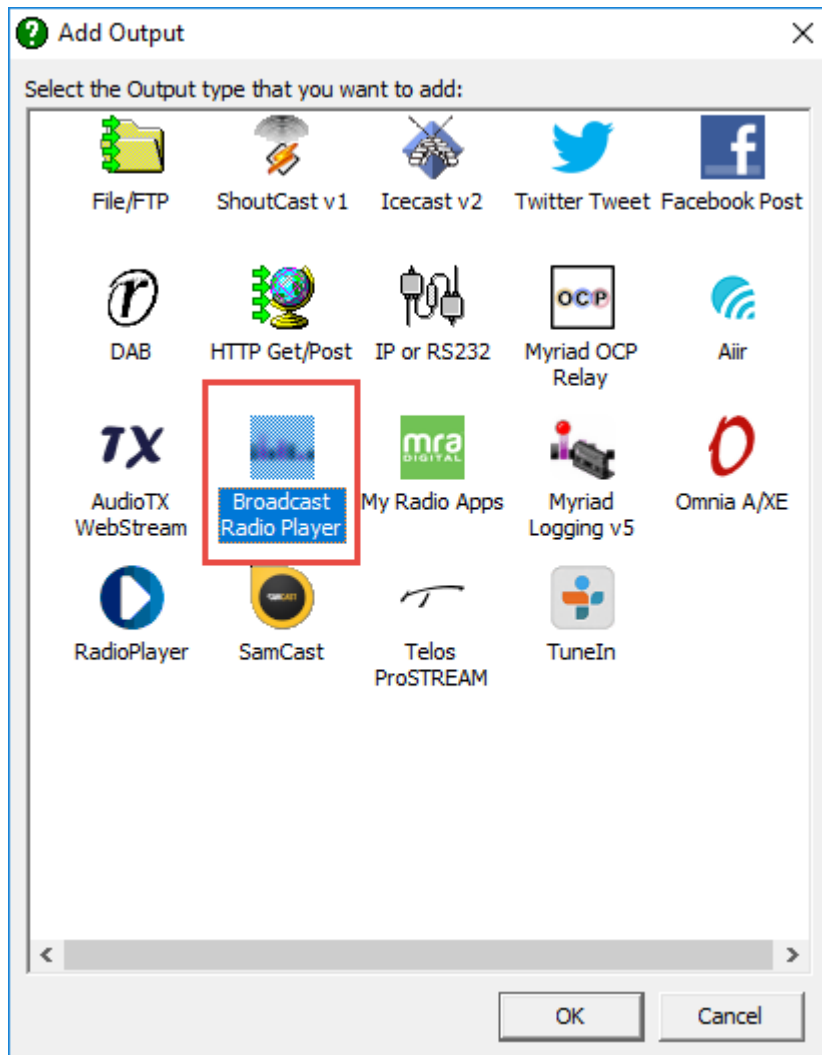


3. If you are happy that the correct Myriad system is controlling OCP, it is time to add the Broadcast Player output. Click on the '+' button in the Outputs section on the right.



4. You will now see a list of possible **OCP Outputs**. The list will vary depending on whether you have OCP Standard or OCP Pro. You need to select the **Broadcast Radio Player** output and click on **OK**.





**CANT SEE IT? – Don't panic, follow these additional steps.**

- I. Go to <http://www.broadcastradio.com/services/streaming-encoding-broadcast-player/broadcast-player/>
- II. Scroll to towards the bottom of the page until you see the **Resources** section. There you will see links to three files:
  - a. **BRPlayer Icon**
  - b. **BRPlayer Config File**
  - c. **BRPlayer Text File**

## Resources

In order to display 'Now Playing' information on your Broadcast Player you will need the follow:

- Myriad 4 Payout (Studio Edition)
- OCP 4 Standard
- OCP 4 Broadcast Player Configuration Files

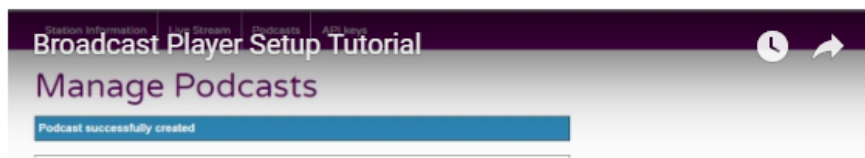
You will also need to be running 'from the log' in live, auto or autofade payout modes.

Whilst all future releases of OCP 4 will include the Broadcast Player Configuration Files, users of earlier builds will need to download the three files below and save them into the OCP Outputs folder (most likely C:\Program Files(x86)\P Squared\Myriad OCP v4.0\Outputs)

- [BRPlayer Icon](#)
- [BRPlayer Config File](#)
- [BRPlayer Text File](#)

## Tutorial Videos

### Setting Up Your Broadcast Player

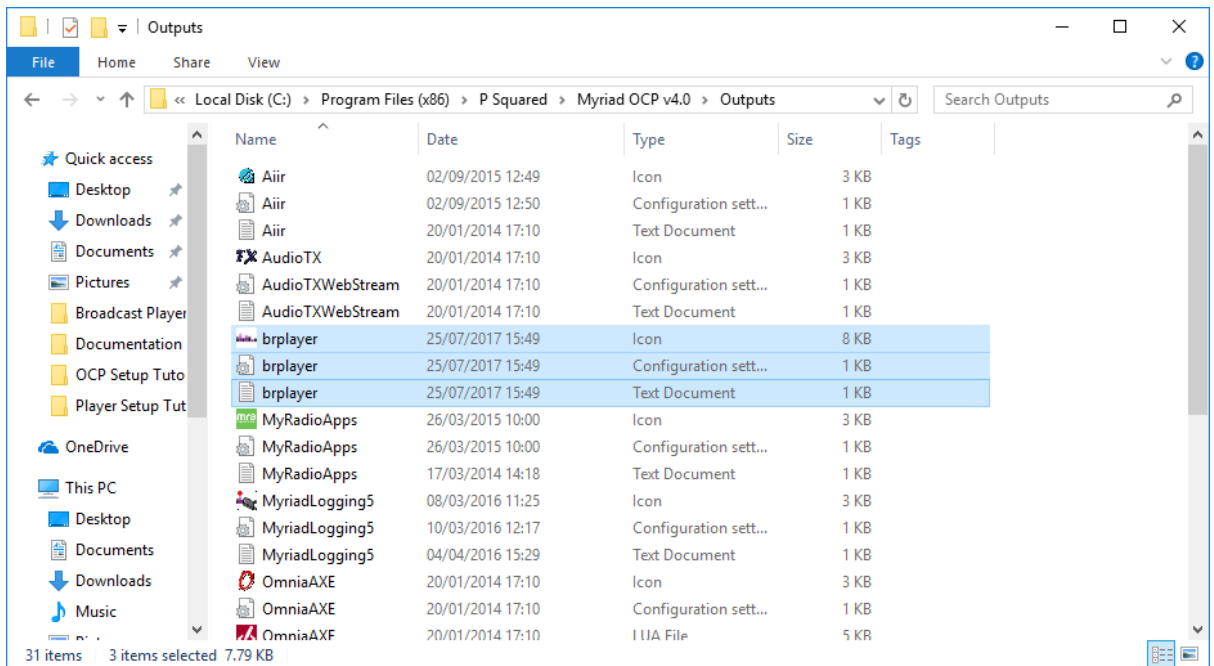


- d. **Right Click** on each of these files and **Save Link As** (this is what Chrome calls it, other browsers might word it differently but basically we need to save the files to your computer). Save them somewhere easily accessible like your **Desktop**.
- e. Open a **Windows File Explorer** and navigate to the following folder location.

**C:\Program Files (x86)\P Squared\Myriad OCP v4.0\Outputs**

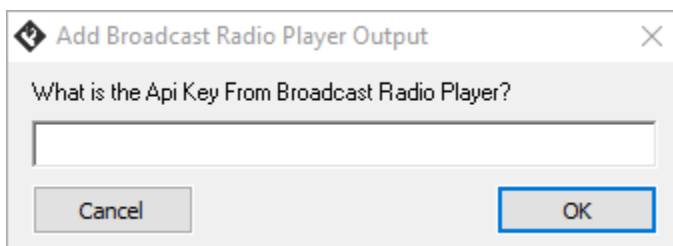
N.B. This is the default location. If you have installed OCP in a custom location, you will need to find the OCP Outputs folder.

- f. **Paste** the three files you downloaded into this location.



g. You will need to **Restart OCP** but the **Broadcast Radio Player Outputs** should now be listed in the **Outputs Option window**.

- Once you have selected **Broadcast Radio Player** from the Outputs list and clicked on **OK**, you will be asked to input the **API Key**.



- Paste** in the **API Key** you got in Step 1 and click on **OK**.

You should now be all setup. Start the Log in Myriad and look at your Broadcast Player to see the 'Now Playing' information in action.

### Need More Information?

Why not try the Broadcast Player Tutorial Videos for more detailed information about setting up your Broadcast Player.

Broadcast Player Setup - <https://youtu.be/8VZwWr1ktFO>

Setting Up OCP For Now Playing Information - <https://youtu.be/lktoq8p2MJk>

Or visit <http://www.broadcastradio.com/services/streaming-encoding-broadcast-player/broadcast-player/>