

Broadcast Radio Ltd

MYRIAD LOGGING PLAYBACK

User Guide v1

OVERVIEW

Myriad Logging is divided into two main products – *Myriad Logging Recorder* and *Myriad Logging Playback*. We will refer to these as ‘Logging Recorder’ and ‘Logging Playback’ from now on in this user guide.

This guide is on the Logging Playback and contains screenshots from v5.6. If you are using a higher version the interface may be slightly different.

There is a separate User Guide on Logging Recorder available at www.broadcastradio.com/support/myriad-5-logging-support/documentation/.

With every Logging Recorder license, you have an unlimited number of Logging Playback licenses to install on your machines within your network. This application allows you to see and manipulate the audio and data that has been captured by the recorder. This allows for your Sales team along with Production or News to take clips from your output for playback or re-use later.

INSTALLATION

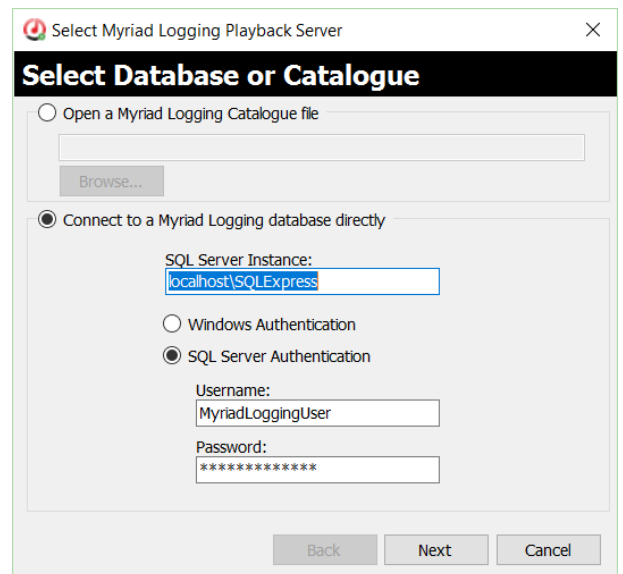
Go to <http://www.broadcastradio.com/support/myriad-5-logging-support/myriad-5-logging-downloads/> and download the latest full release of the Logging Playback software. Once downloaded double click on the .exe file to begin the installation.

Read and accept the Click-Wrap license agreement and click on Next.

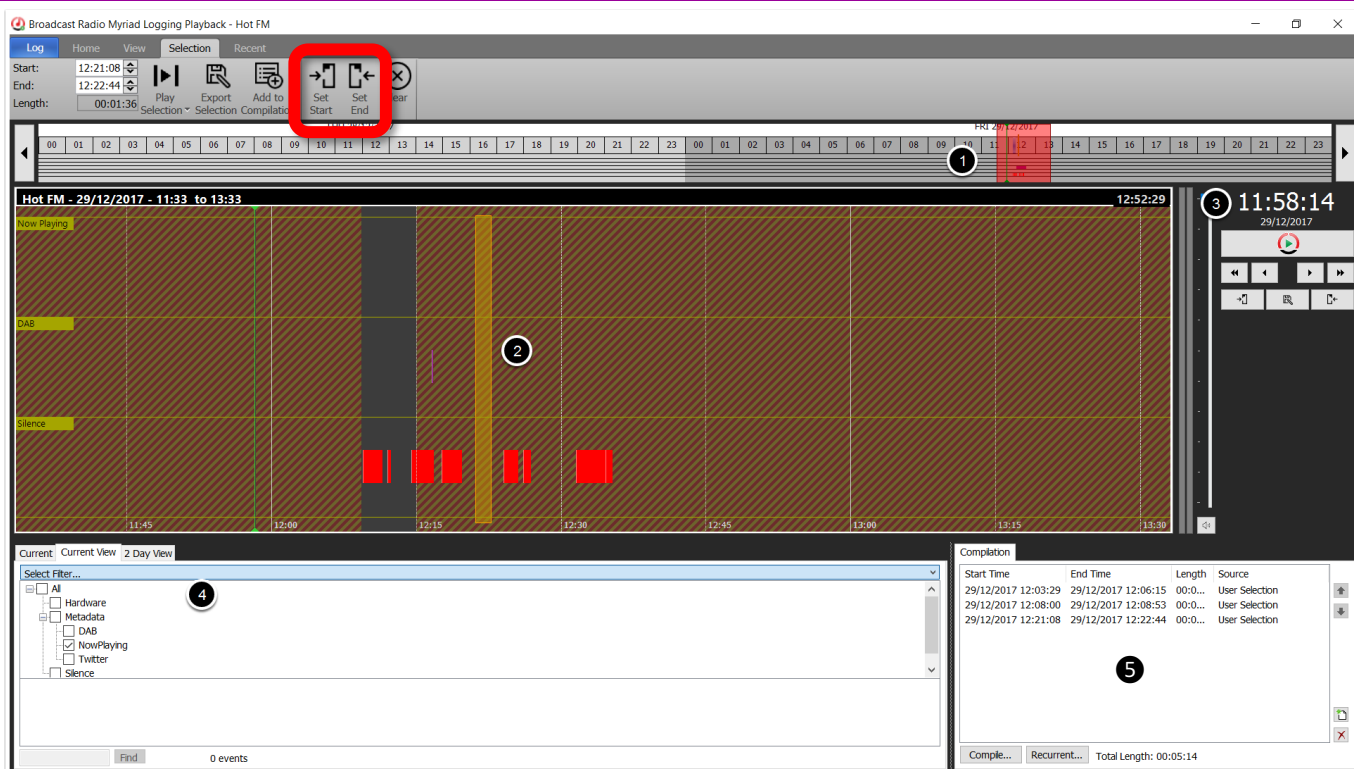
Click on Install in the next window. After this is complete another window will display, click on Finish.

There is no license required so this step is not required and the application can be run straight after installation.

On first launch you will be asked for the location of the Myriad Logging Catalogue File or the SQL server details. Once this data has been added click on **Next**. It will then ask for which log you would like to open. Choose the desired log and click on **Open**.



THE INTERFACE



The interface of the window is like many audio editors with an overview of the data captured over the last 48 hours at the top ① and a more zoomed in window below ②. To the right of this window is the date and time ③ of where the playhead currently is. The number of tracks are dependent on what you are capturing. In this example we have 3 tracks of metadata - Now Playing, DAB text and Silence information and the audio we are capturing is underneath all tracks and shown in the above screenshot in Grey. The hashed out area doesn't contain any audio. Left clicking with the mouse will move the playhead to that position and you can tap the spacebar or click on the play icon to hear the audio from that point.

The data captured is shown in coloured blocks and if you move your mouse cursor over one of the blocks the tooltip gives you the information captured. You can see this information displayed in a list view by left clicking and dragging up the Metadata Panel ④ from the bottom of the screen. This reduces the height of the tracks.

The Compilation Panel ⑤ enables the mixdown of audio captured by its metadata timestamps or by manual selection of in and out points. Compile a list of entries and then 'Compile' them to make one audio file.

You can also choose just to set an In and Out point (highlighted in red box above) within your data capture and export that as a new audio file.

LOG MENU

The Log menu is the only menu in the Logging Playback application. The rest are ribbon views which show various buttons for specific tasks.

Select Log enables you to swap between any logs/services you have set up within Logging Recorder. This does require that you have already connected to a Log database or opened a Catalogue File. Which you do by using the next menu item.

Connect to Log Database/Catalogue... Opens the window you saw during first launch and enables you to choose between the Catalogue File or an SQL database instance. A Catalogue File can be used however is designed mainly if you have multiple Logging Recorder machines running on your network. If you have only one physical machine doing your logging then for ease you should stay with connecting to your SQL database as you would if running Myriad Playout.

It enables you to select the log you wish to view or connect to another log database or catalogue file.

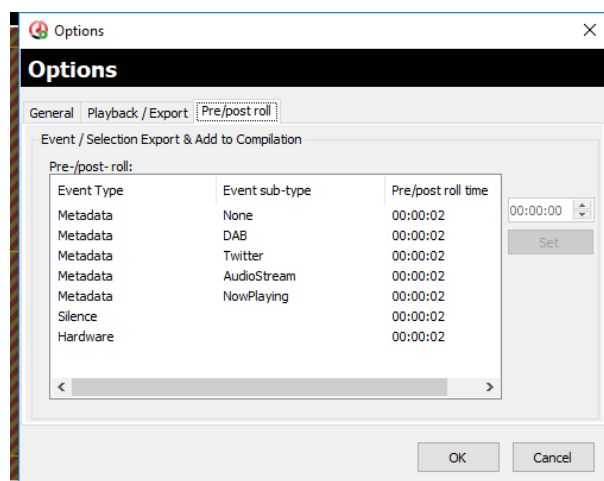
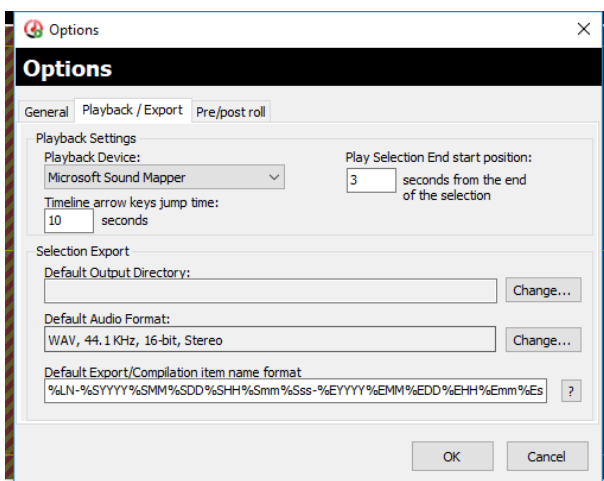
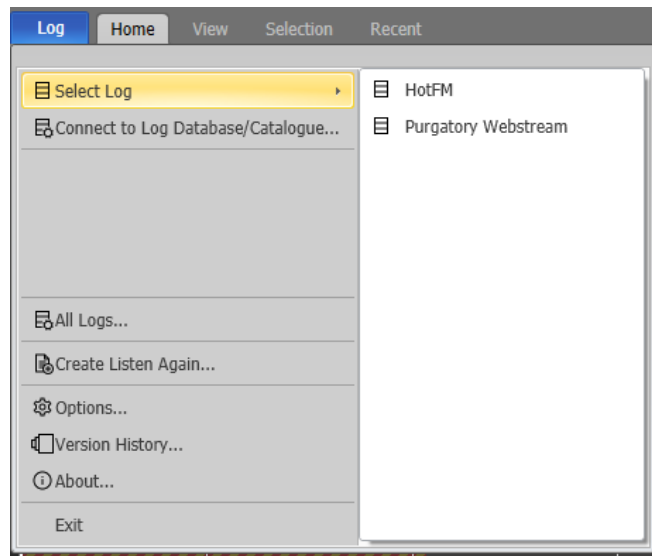
All Logs brings up another window showing all logs associated within a Catalogue File.

Create Listen Again is detailed [later in this guide](#).

Options – brings up the windows below. General tab enables you to clear the previously opened logs.

Playback / Export tab allows to you set the playback device and some playback and navigation settings. Here you can set the default location of any compilation or exported audio created as well as its audio format and how it is titled. Clicking on the **?** shows the syntax for the auto creation of the exported files filename.

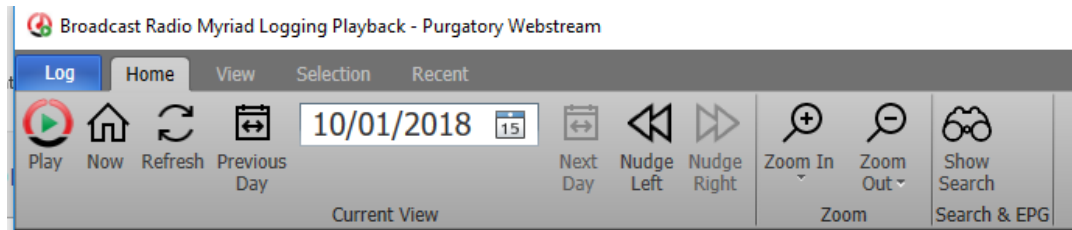
The **Pre/post roll** tab enables you to change the default durations when a certain type of metadata is added to the compilation or exported.



Version History shows a webpage with the details of the version you are running and what has changed within that version and past versions.

About shows the exact version number and allows you to click through to the Broadcast Radio support website or click to send an email.

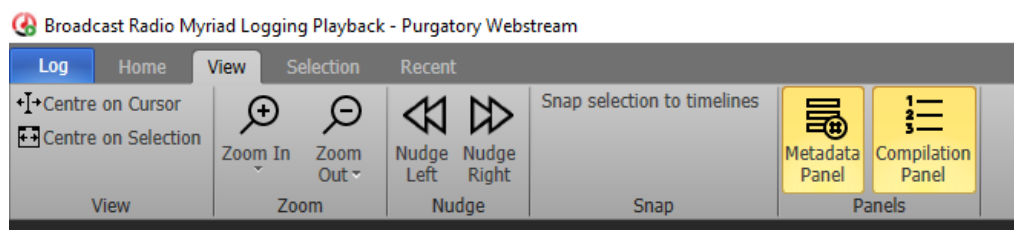
HOME TAB



Most of these buttons need no explanation apart from the Nudge Left and Nudge Right buttons. These allow you to move within the current view earlier or later in the log.

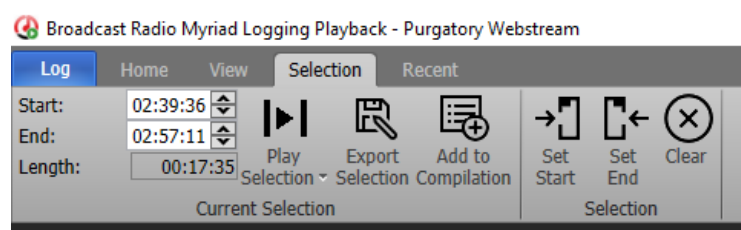
The small arrows by the Zoom controls allow you to fully zoom in or out as far as possible in one click. This tab is also where you bring up the search window.

VIEW TAB



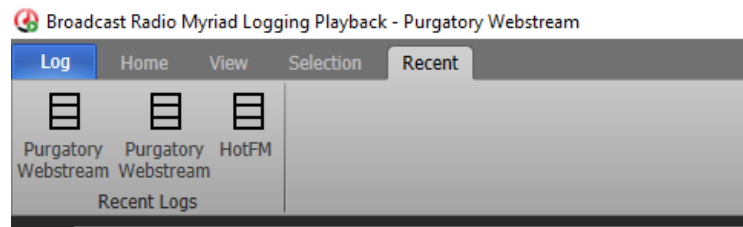
This allows you to change the Interface by showing or removing the Metadata and/or Compilation Panel and brings across some of the same options from the Home Tab and a way to centre your view based on the play cursor or selection.

SELECTION TAB



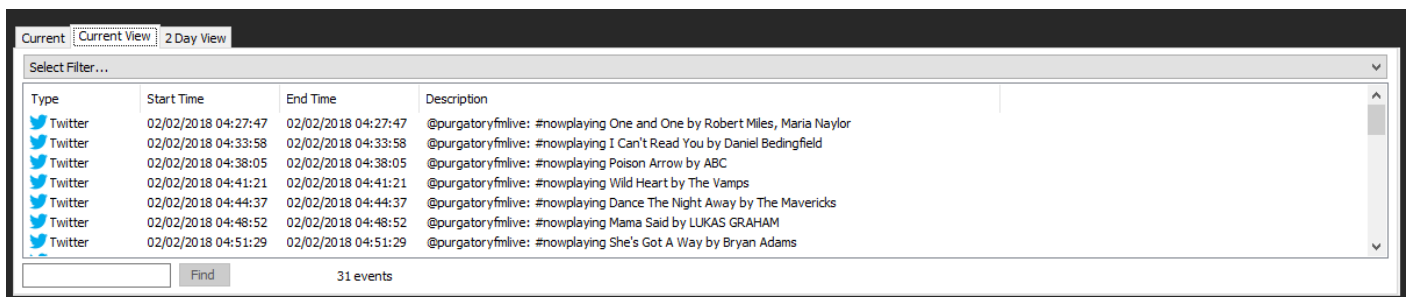
Enables all types of selection and information on the selection in the timeline. You can fine tune your selection area with the Start: and End: timing windows as well as directly export your selection of audio or add it to a compilation.

RECENT TAB



Shows the recent logs you have opened and enables you to click on them to open.

METADATA PANEL

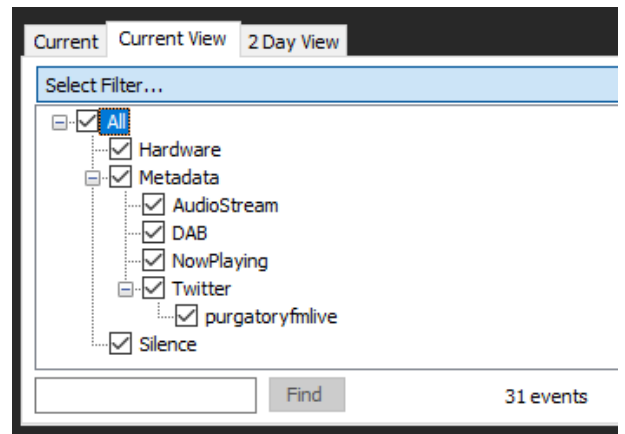


The panel is at the bottom of the screen. If you can't see it go to the **View Tab** and click on **Metadata Panel**. Within this panel are three tabs. Current shows the item where the playhead currently is in the main window. Current View shows all the metadata captured within the period of time that is shown in the main window as you zoom in and out this list will increase and decrease and the 2 Day View shows all the metadata captured over the last 2 days (48 hours) shown in the top zoomed out window.

You can further refine this list by adding filters to it to perhaps only show the now playing information captured or just the silences.

From this newly filtered list you can click an item or ctrl+click to select multiple entries then right click to choose between Playing just those items, Exporting the items to audio files, adding to a compilation with or without a pre-roll or just copy the descriptions to plain text for pasting in a document.

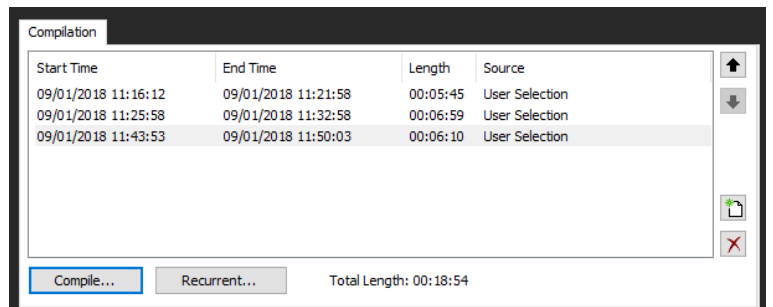
You can find items by name in the box next to the Find button or filter the metadata results by type by clicking on the Select Filter ... bar and adding or removing ticks based on the type of metadata you want to show. You can then do a further Find within those results. When a result is found the playhead will jump to that point in the main window and you can choose to play from that point. You can also click on the results to jump to that particular point in the log. Items can also be dragged from the Metadata panel to the Compilation Panel.



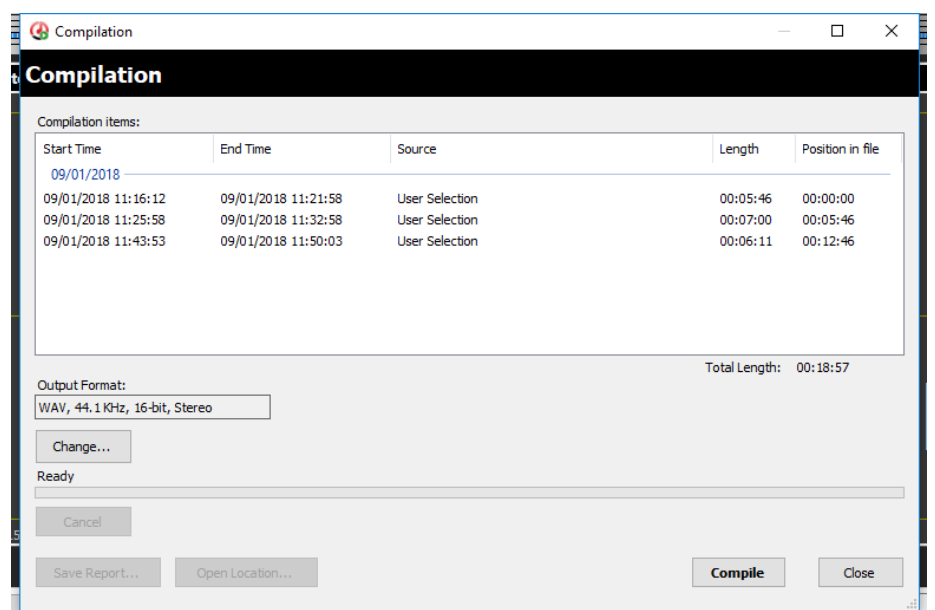
The panel can be made taller or shorter by left clicking just above the three tabs and dragging. This will reduce the size of the main window.

COMPILATION PANEL

A compilation is a selection of audio in and out points that you would like as one single file of audio. You can add to the compilation list by highlighting a portion of the timeline and either clicking on the Add to Compilation button within the Selection tab or left clicking and dragging your selection into the window directly. You can also drag events from the Metadata panel and Search window. Once you have your selections these can be re-ordered using the up and down arrow buttons on the right-hand side of the panel. If you wish to remove an entry, highlight it and click on the red X button. You can clear the list using the new list button which is above the red X button.

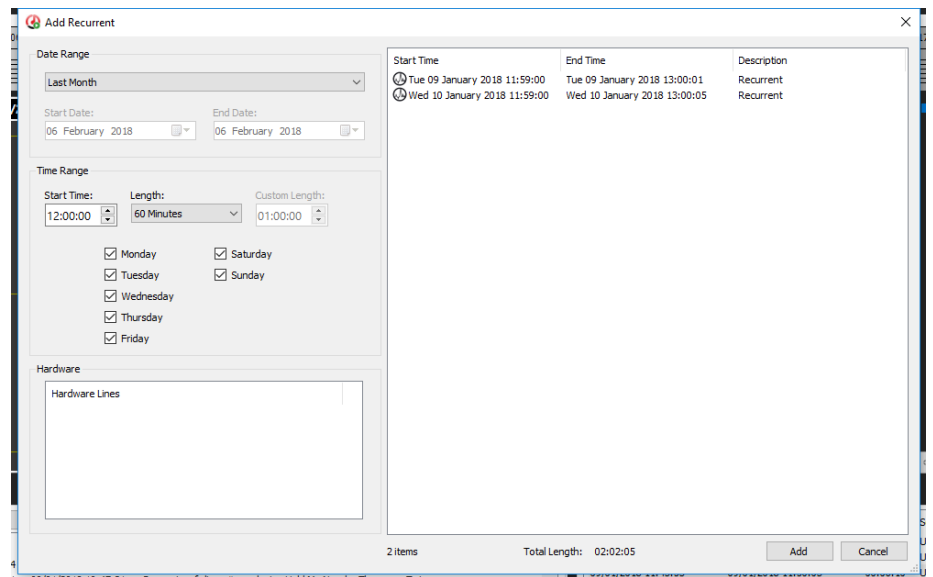


When you are ready click on the **Compile** button. This will bring up the window on the right. You can change the output format of the audio and when you click on Compile will be asked to choose a destination for the audio to be saved to. A progress bar will go across the window and a dialog box will display once the audio is compiled. You can choose to save a .html report of your compilation items using the **Save Report** button and using the **Open**



Location button will open the destination folder where the audio was saved.

The **Recurrent** button brings up the recurrent window allow you to go back in time and pull out certain parts of audio. In this example it is pulling out the two midday shows it recorded in January and the audio length is set to 60 minutes. When you click on add you can title the name of the Source and these will be adding to the bottom of the current compilation list.



SEARCHING THE LOG

The screenshot displays a search log interface. On the left, there are search filters: 'Date Range' set to 'Today', 'From' and 'Until' dates set to '09/01/2018', 'Between' and 'And' time ranges set to '00:00:00' and '23:59:59', and 'Event Type' and 'Event Sub-type' dropdown menus. A 'Search For:' field contains the word 'love'. Below the filters are 'Search' and 'Stop Search' buttons. The main area is a table with columns: Start Time, End Time, Length, Type, SubType, and Description. The table lists 13 events, all with a length of 00:00:00 and type of Metadata. The second row is highlighted in blue. At the bottom, there is an 'Add To Compilation' button and a counter showing '13 events'.

Start Time	End Time	Length	Type	SubType	Description
09/01/2018 09:18:47	09/01/2018 09:18:47	00:00:00	Metadata	Twitter	@purgatoryfm live: #nowplaying Love Story by Taylor Swift
09/01/2018 09:33:49	09/01/2018 09:33:49	00:00:00	Metadata	Twitter	@purgatoryfm live: #nowplaying Its A Love Thing by The Whispers
09/01/2018 10:20:03	09/01/2018 10:20:03	00:00:00	Metadata	Twitter	@purgatoryfm live: #nowplaying Could You Be Loved by Bob Marley, The W
09/01/2018 10:44:14	09/01/2018 10:44:14	00:00:00	Metadata	Twitter	@purgatoryfm live: #nowplaying Ordinary Love by U2
09/01/2018 10:56:42	09/01/2018 10:56:42	00:00:00	Metadata	Twitter	@purgatoryfm live: #nowplaying Love Shy by Kristine Blond
09/01/2018 11:27:08	09/01/2018 11:27:08	00:00:00	Metadata	Twitter	@purgatoryfm live: #nowplaying Love Is A Battlefield by Pat Benatar
09/01/2018 12:10:12	09/01/2018 12:10:12	00:00:00	Metadata	Twitter	@purgatoryfm live: #nowplaying Call It Love by Deuce
09/01/2018 12:26:49	09/01/2018 12:26:49	00:00:00	Metadata	Twitter	@purgatoryfm live: #nowplaying All I Wanna Do Is Make Love To You by He
09/01/2018 12:37:12	09/01/2018 12:37:12	00:00:00	Metadata	Twitter	@purgatoryfm live: #nowplaying I Love Music by Rozalla
09/01/2018 13:21:24	09/01/2018 13:21:24	00:00:00	Metadata	Twitter	@purgatoryfm live: #nowplaying Show Me Love (America) by The Wanted
09/01/2018 13:45:23	09/01/2018 13:45:23	00:00:00	Metadata	Twitter	@purgatoryfm live: #nowplaying Someone Loves You by Lutricia McNeal
09/01/2018 15:03:51	09/01/2018 15:03:51	00:00:00	Metadata	Twitter	@purgatoryfm live: #nowplaying Lay All Your Love On Me by Abba
09/01/2018 15:08:19	09/01/2018 15:08:19	00:00:00	Metadata	Twitter	@purgatoryfm live: #nowplaying Lovegame by Lady Gaga

You can search the log for words contained in the metadata captured by clicking on the **Home** tab and choosing the **Search Log** button.

You can restrict the search to different timeframes and event types/sub-types. Within the search result you can double click on a result to be taken to that exact time and date and the audio will start to play.

You can also drag search results into the Compilation panel to be added to a mixdown or click on **Add to Compilation** button at the bottom of the search window.

LISTEN AGAIN

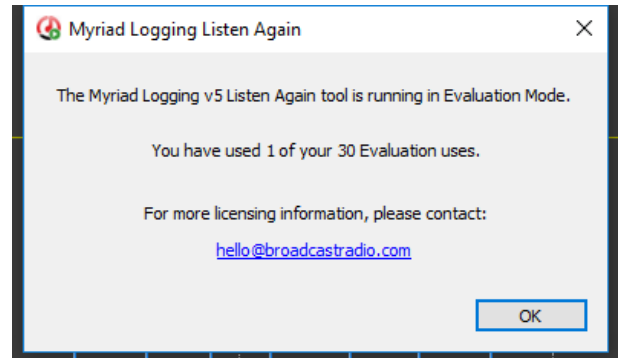
This is an additionally licensed feature within Myriad Logging Playback and enables you to create a whole show for either playback on your station at another time or to be used as a podcast file or listen again facility on your website or app.

To start it go to the **Log** menu and choose **Create Listen Again**. This will load up the main window and if unlicensed you will see the message on the right. You can trial the tool for 30 times before needing to license it.

To license go to **Settings – License Details...** This will bring up the normal licensing wizard and allow you to type or paste in your License name and your features code. These are supplied by Broadcast Radio licensing team. You can then choose to Obtain a license code over the internet or license over the telephone or secure website on another machine which is useful if this machine is not connected to the internet.

If you have used the Listen Again creator before or previously saved a configuration you can choose to **Import Settings...** from a config file otherwise choose **Select Log...** to bring up the same window you use to open the log you wish to work with. You can decide, whether or not, to use a Database source type or, as in this example, a Catalogue file. Then choose the Log you wish to work with.

You then set the Start and End times and the date from which you want to extract the audio. Decide which audio format you would like the extracted audio to be in and the destination/save location of this audio once extracted. This can be a file on a network or local drive or from the dropdown you can choose ftp and enter the server address and username and password if required.



You can choose to create or append a log file each time this process takes place and you can decide on your level of logging with the tick boxes. Once you are happy with your selection click on **Create**. A progress bar will go along to the bottom of the window and when the file is created you will be alerted.

FILE MENU

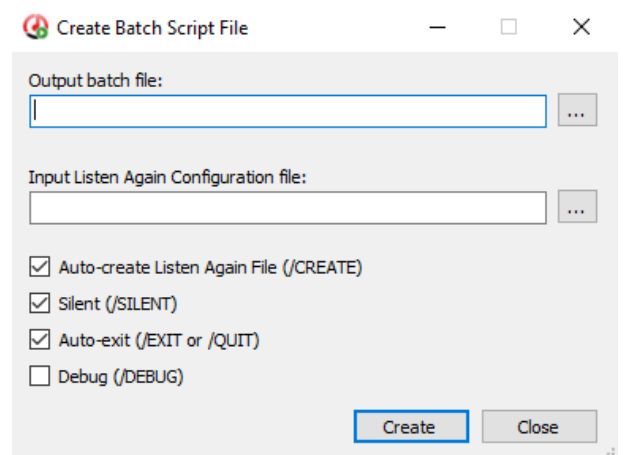
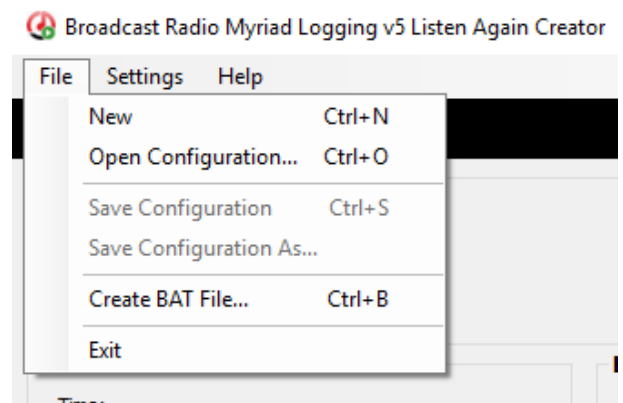
New enables you to start with a blank window and removes any previously inputted or imported settings.

Open Configuration... Is used to open any .la5 files you have on your system.

Save Configuration and **Save Configuration As...** enable you to save any settings you change within the window so they are easily retrievable and able to be used again. This will reduce the chance of user error when setting up a listen again file creation.

Create BAT File... Brings up the window on the right. Choose the location using the ... button and title the name of the batch file. Navigate to the Configuration File and tick the appropriate boxes below. By default, the top three are ticked and this is normally sufficient. You may need to tick the debug box if you are finding problems with the file creation process. Click on **Create** to make your batch file. This can then be used in the Windows™ Task Scheduler to automate the process of the creation of the files.

For this to work on an ongoing basis you need to use the Current Day or offset from Current Day settings to create a variable within the file as it will be running at different days/dates in the future.



HELP MENU

Command line help... brings up a dialog box showing the commonly used syntax within a batch file which you can hand write or use the **Create BAT File..** menu item discussed above.

About Myriad Logging v5 Listen Again Creator... shows the current version and build number of the application and gives support website and email details.

